

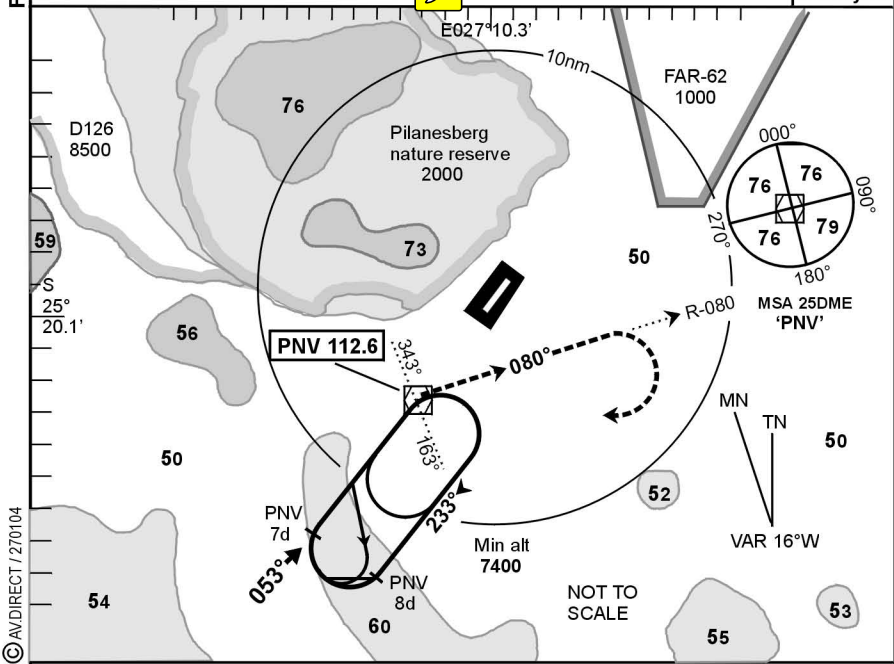
Elev 3412 OCH: 690

(SUN CITY) **PILANESBERG INTL**
(Cat A - D) **BREAKCLOUD VOR/DME 05**

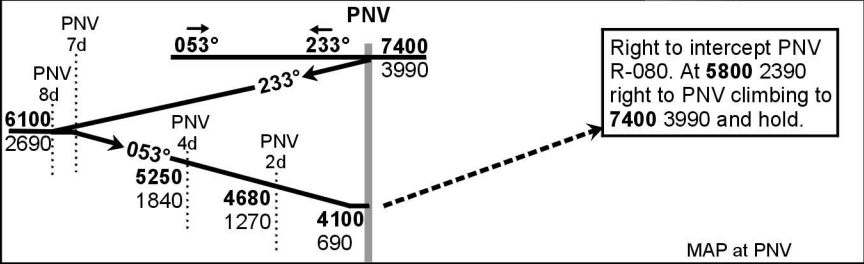
FAPN

PILANESBERG Tower
118.4

VOR-01
EFF
08 July 04



© AVDIRECT / 270104



MAP at PNV

A/D Elev 3412/119hPa

CAA South Africa

turn	kt	T.Lev T. ALT	ATC 7400
	200		—
	180		
	160		
	140		
	120		
	100		
	80		

1. This procedure is conducted outside controlled airspace, entirely at the discretion of the pilot in command.
2. Initial approach **7400** or higher MSA. Descend in the hold to **7400**.
3. Procedure turn approach applicable only within 30° of the outbound heading. Use phraseology 'Request procedure turn approach'.
4. Circling not authorised N/W of AD. Circle to land S/E of AD at pilots discretion.
5. RoD from 7d computes at 2.7° angle of descent.

Advisory Alt/Hgt			
G/S	+20s	+40s	+60s
160 kt			
140			
120			
100			
80			

Rev: Topo clearance heights and MSA reviewed. Chart #. WGS-84